



SWAP Polyclonal Antibody

Catalog No	YP-Ab-02063
Isotype	IgG
Reactivity	Human;Rat;Mouse;
Applications	WB;IHC
Gene Name	SFSWAP
Protein Name	Splicing factor suppressor of white-apricot homolog
Immunogen	The antiserum was produced against synthesized peptide derived from human SFRS8. AA range:201-250
Specificity	SWAP Polyclonal Antibody detects endogenous levels of SWAP protein.
Formulation	Liquid in PBS containing 50% glycerol, 0.5% BSA and 0.02% sodium azide.
Source	Polyclonal, Rabbit,IgG
Purification	The antibody was affinity-purified from rabbit antiserum by affinity-chromatography using epitope-specific immunogen.
Dilution	WB 1:500-2000;IHC-p 1:50-300
Concentration	1 mg/ml
Purity	≥90%
Storage Stability	-20°C/1 year
Synonyms	SFSWAP; SFRS8; SWAP; Splicing factor; suppressor of white-apricot homolog; Splicing factor, arginine/serine-rich 8; Suppressor of white apricot protein homolog
Observed Band	105kD
Cell Pathway	Nucleus .
Tissue Specificity	Brain,Epithelium,Eye,Placenta,Skin,
Function	function:May function as an alternative splicing regulator. Regulate its own expression at the level of RNA processing. Also regulates the splicing of fibronectin and CD45 genes. May act, at least in part, by interaction with other R/S-containing splicing factors.,PTM:Phosphorylated upon DNA damage, probably by ATM or ATR.,similarity:Contains 2 SURP motif repeats.,
Background	This gene encodes a human homolog of Drosophila splicing regulatory protein. This gene autoregulates its expression by control of splicing of its first two introns. In addition, it also regulates the splicing of fibronectin and CD45 genes. Two transcript variants encoding different isoforms have been identified. [provided by RefSeq, May 2012],



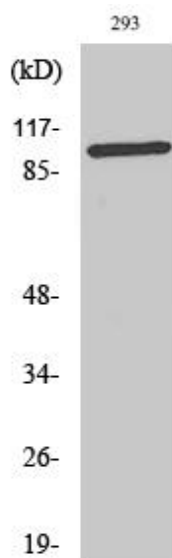
matters needing attention

Avoid repeated freezing and thawing!

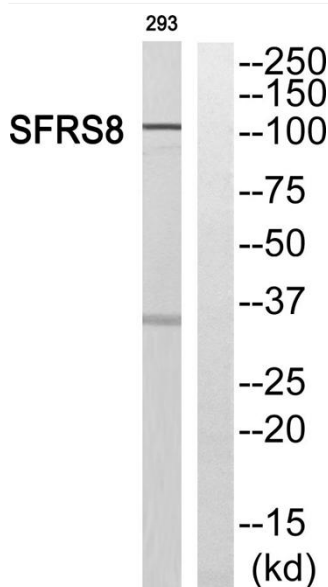
Usage suggestions

This product can be used in immunological reaction related experiments. For more information, please consult technical personnel.

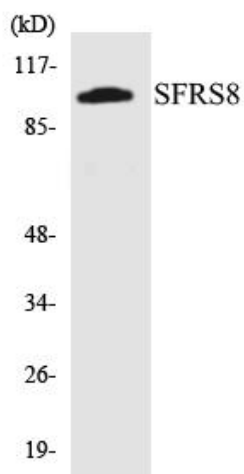
Products Images



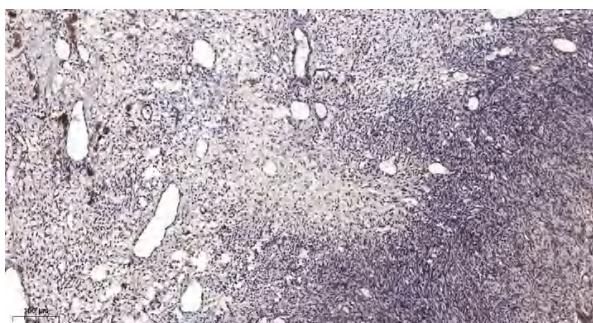
Western Blot analysis of various cells using SWAP Polyclonal Antibody cells nucleus extracted by Minute TM Cytoplasmic and Nuclear Fractionation kit (SC-003, Inventbiotech, MN, USA).



Western blot analysis of SFRS8 Antibody. The lane on the right is blocked with the SFRS8 peptide.



Western blot analysis of the lysates from 293 cells using SFRS8 antibody.



Immunohistochemical analysis of paraffin-embedded human oophoroma. 1, Antibody was diluted at 1:200(4° overnight). 2, Tris-EDTA,pH9.0 was used for antigen retrieval. 3,Secondary antibody was diluted at 1:200(room temperature, 45min).